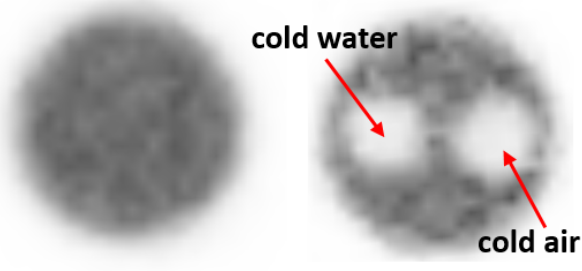
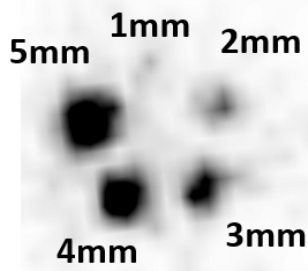
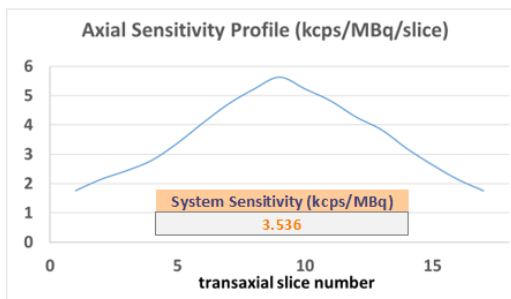
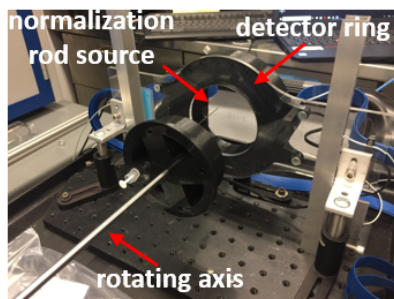
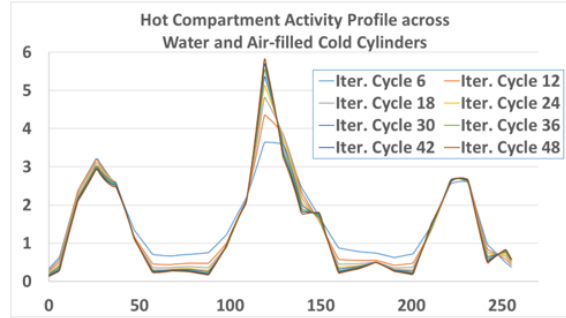
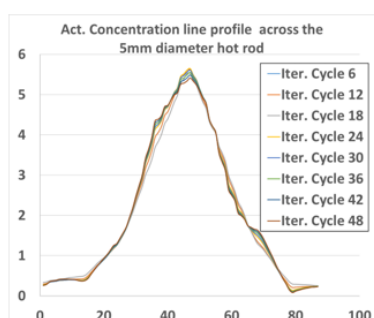
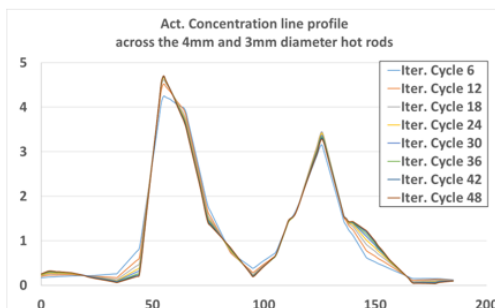
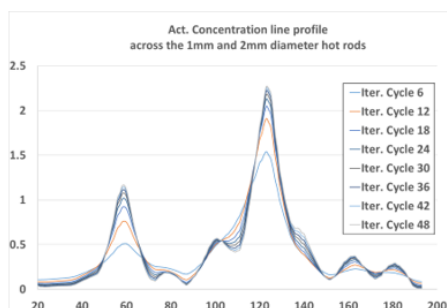


SynchroPET WristPET™ NEMA NU4 Performance



Hot Rods Compartment Water Compartment Cold Cylinders in hot (summed slices) Hot Background water compartment



Background Uniformity	Mean	Max	Min	%STD	Cold Region Spill-over Ratio (SOR)	%STD of SOR
	4.862	8.604	2.234	17.975		

Rod Diameter	1mm	2mm	3mm	4mm	5mm
%Recovery Coeff. (RC)	21.777	40.616	58.350	86.352	96.211
%Std.Dev. (STD) of RC	28.121	26.720	21.071	20.220	19.521

Spatial Resolution	FWHM & FWTM (mm) averaged between 2 slices: @ axial center & @ 1/4 axial FOV distance from center									
	0 mm		5mm		10mm		15mm		25mm	
	FWHM	FWTM	FWHM	FWTM	FWHM	FWTM	FWHM	FWTM	FWHM	FWTM
Radial	1.493	2.727	1.539	2.810	1.188	2.170	3.021	5.518	3.386	6.184
Tangential	1.213	2.216	1.441	2.632	2.609	4.765	2.409	4.400	2.168	3.959
Axial	2.861	5.225	2.838	5.182	2.135	3.898	4.519	8.253	4.694	8.572